

53201 Thrust ball bearings, single direction

- Popular item

Thrust ball bearings, single direction

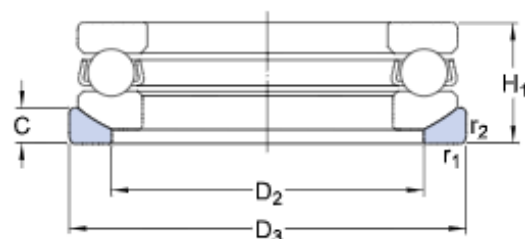
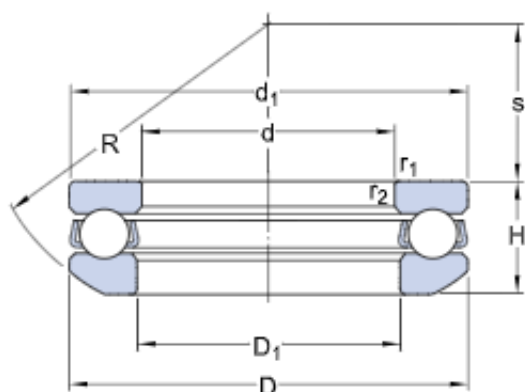
Bearing data

[Tolerances,](#)
table 1

Bearing interfaces

[Seat tolerances for standard](#)
[conditions,](#)
[Tolerances and resultant fit](#)

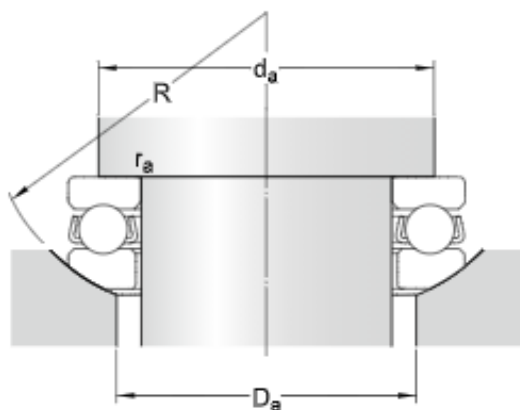
Technical specification



DIMENSIONS

d	12 mm	Bore diameter
D	28 mm	Outside diameter
H	11.4 mm	Height
H ₁	13 mm	Height bearing including seat washer
d ₁	≈ 28 mm	Outside diameter shaft washer
D ₁	≈ 14 mm	Inner diameter housing washer
D ₂	20 mm	Inner diameter sphered seat washer
D ₃	30 mm	Outside diameter sphered housing washer
C	3.5 mm	Height sphered housing washer
R	25 mm	Radius sphered housing washer
s	11.5 mm	Centre height housing washer sphere
r _{1,2}	min. 0.6 mm	Chamfer dimension washer

ABUTMENT DIMENSIONS



d_a min. 22 mm Abutment diameter shaft

D_a max. 20 mm Abutment diameter housing

r_a max. 0.6 mm Fillet radius



CALCULATION DATA

C	13.3 kN	Basic dynamic load rating
C_0	20.8 kN	Basic static load rating
P_u	0.765 kN	Fatigue load limit
	8 000 r/min	Reference speed
	11 000 r/min	Limiting speed
A	0.002	Minimum load factor

MASS

0.045 kg	Mass bearing (including seat washer where applicable)
----------	---

ASSOCIATED PRODUCTS